



Sicuro Bridge Parapet

www.vikorsta.no

Sicuro bridge parapet combines good design with a high level of safety. The barriers are constructed from round and curved profiles that safeguard the safety of the more vulnerable road users.

The main element of the post is a solid steel rod that provides sufficient strength in spite of its slim appearance. The barrier has a width of just 306mm, which means it can be fitted to edge girders with a width of just 400mm.

Sicuro H2 barrier can be used on all bridges, roads, culverts and supporting walls where there is a requirement for containment class H2.

Sicuro H2 barrier can be adapted for various applications by fitting different panels, such as picket panels, noise reduction, snowplough safe panels or special protective panels for bridges over railway lines.

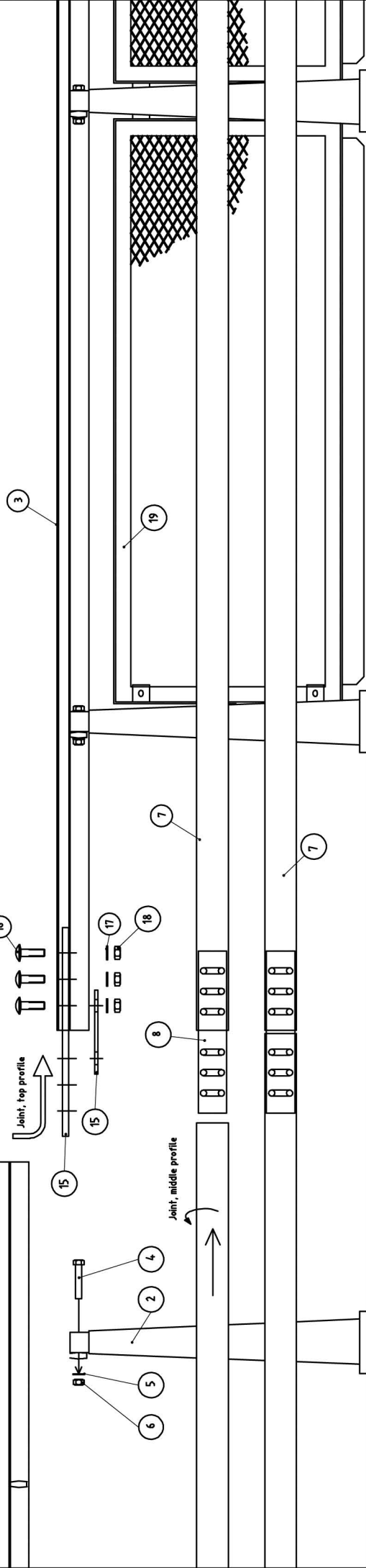
Technical data:

Containment class:	H2
Working width:	W2
Post interval:	2m
Damage class:	B
Tested in accordance with:	EN-1317

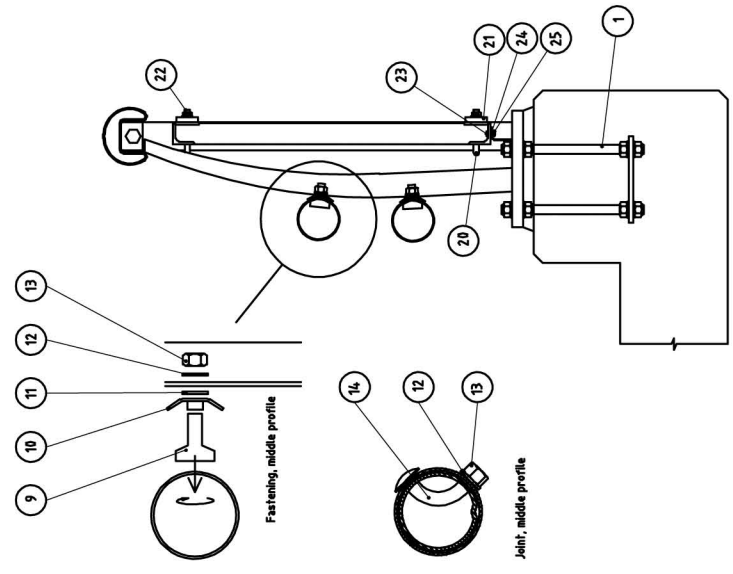
a **SAFEROAD** company

DUBLIN OFFICE

MOTORWAY CARE Crofton House Unit 5 Greenhills Ind Est Walkinstown Dublin 12 IRELAND
Tel + 353 1 4569888 Fax + 353 1 4569898 Mobile + 353 87 2597087



Direction of traffic



Pos	Art.nr.	Description	Pos	Art.nr.	Description
1.1	62073	Bolgroup 140x140 M20x330 A4	19	62162	Wire mesh panel
1.2	62071	Bolgroup 140x140 M20x330 Hot-dip galv.	20	62196	U-Clamp 267 M12 8.8 Hot-dip galv.
2.1	62100	Post type 1N	21.1	62108	Binding clamp, std.
2.2	62101	Post type 1S	21.2	62109	Binding clamp, end
3.1	62110	Top profile L = 7690 mm	22	60710	Binding screw M12x40 8.8 Hot-dip galv.
3.2	62112	Top profile L = 5960 mm	23	933306016	Screw DIN933 M6x16 8.8 Hot-dip galv.
3.3	62114	Top profile L = 3960 mm	24	125306000	Washer DIN 125 M6 Hot-dip galv.
4	93320110	Screw DIN 931 M20x110 8.8 Hot-dip galv.	25	934306000	Nut DIN 934 M6 8.8 Hot-dip galv.
5	125320000	Washer DIN 125 M20 Hot-dip galv.			
6	934320000	Nut DIN 934 M20 8.8 Hot-dip galv.			
7.1	62168	Middle profile L = 7690 mm			
7.2	62170	Middle profile L = 5960 mm			
7.3	62172	Middle profile L = 3960 mm			
8	62191	Connection profile L = 522			
9	V-AR41	T-Bolt M16x37.5 mm 8.8 Hot-dip galv.			
10	V-AR42	Locator plate Hot-dip galv.			
11	V-AR43	Washer assembly locator 30x15.5x1.5 Nylon			
12	60642	Washer DIN 125 17/30/3 M16 Hot-dip galv.			
13	60643	Nut DIN 934 M16 8 Hot-dip galv.			
14	V-AR44	Carridge bolt M16 8.8 Hot-dip galv.			
15	62144	Connection profile			
16	V-AR45	Slurowscrew M24x80 8.8 Hot-dip galv.			
17	125324000	Washer Din M24 Hot-dip galv.			
18	934324000	Nut DIN 934 M24 8.8 Hot-dip galv.			